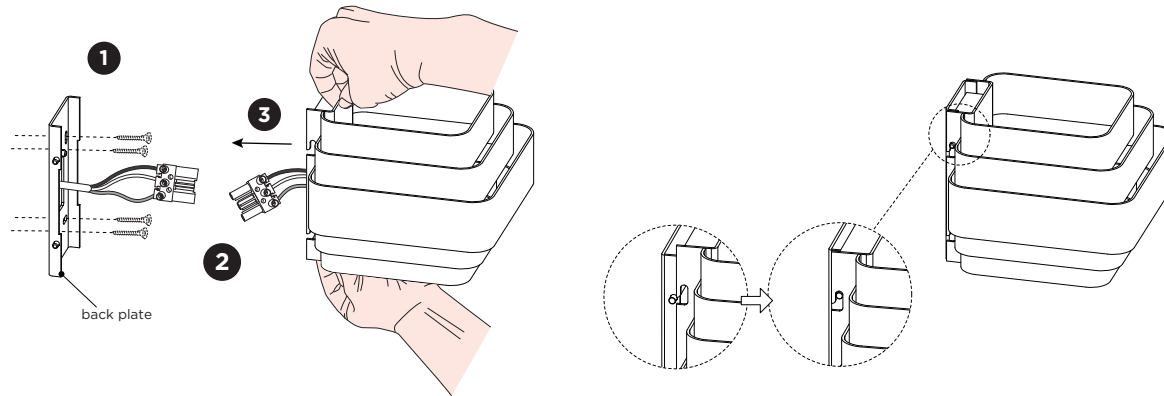


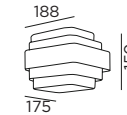
J.J.W. 02

INSTALLATION INSTRUCTIONS | DECEMBER 2020



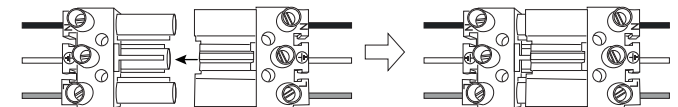
Please do not hold the luminaire by the lamellas when installing the product. For aesthetical reasons please make sure that the lamellas hang parallel after installation.

DIMENSIONS



MOUNTING INSTRUCTION

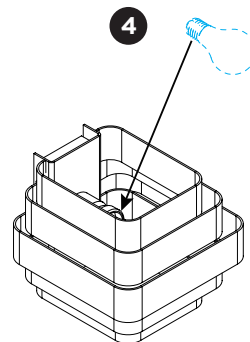
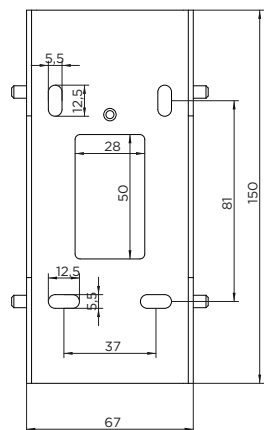
- 1 Remove the back plate and mount it on the wall with screws (screws are not included).
- 2 **POWER CONNECTION**
connect to 220-240V



- 3 Mount the fixture to the back plate by aligning the pins into the slots and sliding the fixture downwards.
- 4 Insert the lamp (not included).
- 5 **EXTRA INFO**

Lamp replacement: the lamp can be replaced by hand, make sure the lamp is cold. For aesthetical reasons: please make sure that the lamellas hang parallel after installation.

back plate dimensions



Installation and replacement of lamp



WEVER & DUCRÉ
LIGHTING

WEVER & DUCRÉ BVBA
Spinnerijstraat 99/21, 8500 Kortrijk, Belgium
weverducre.com